



## THV



### General Description

Single phase power controller has an LED display to show set values and input signals and front keys for easy setting and monitoring. Loaded with versatile standard functions, the THV operates at 100 up to 240V AC and automatically selects power supply frequency 50 or 60Hz.

### Standards Functions

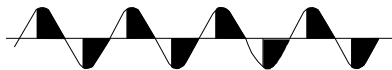
- ☆ Control type selection  
(Phase-angle/continuous zero-cross/zero-cross)
- ☆ Ramp-up, Ramp-down
- ☆ Manual output
- ☆ Gradient setting
- ☆ Output Limiter High and Low

- ☆ Base-up Setting (output bias)
- ☆ Output mode selection  
(proportional electric power/voltage/phase angle)
- ☆ Digital input for Auto/manual
- ☆ Analog input for manual output setting
- ☆ Analog input for Gradient setting

#### Three Types of Control Mode (Selectable)

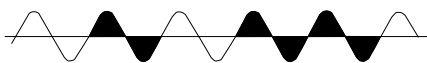
##### ● Phase control

The waveform of the load power is switched at a desired phase angle  $\alpha$  to provide smooth control.



##### ● Zero-cross control (Continuous proportion)

Power is switched on and off when the supply voltage is at 0V. This system suppresses high frequency noise inherent to phase control.



##### ● Zero-cross control (Input synchronization system)

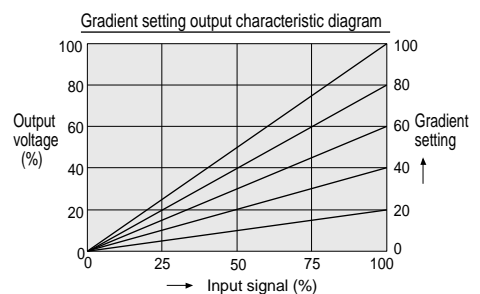
Supply voltage is switched on and off according to the voltage pulse and contact signals from a controller.



#### Gradient Setting

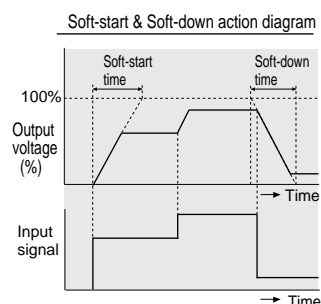
The relation between the setting input and the output voltage can be set. Gradient setting is possible via front keys or an external setter. Control characteristics may vary with the setting as follows.

1. Auto setting input X Internal gradient setting X External gradient setting
2. Auto setting input X Internal gradient setting
3. Manual setting X Internal gradient setting X External gradient setting



#### Ramp function (Soft-start & Soft-down)

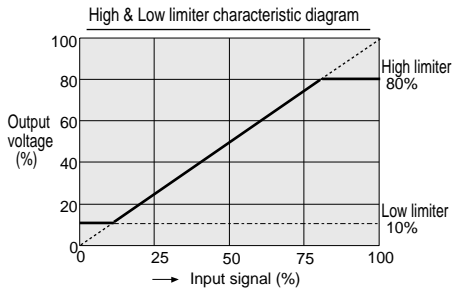
Even if setting input changes abruptly, output changes slowly to suppress inrush current. Ramp-up (Start-up) and ramp down (Start-Down) time can be set in the range of 0.1 to 99.9 sec via front keys.



## Standards Functions

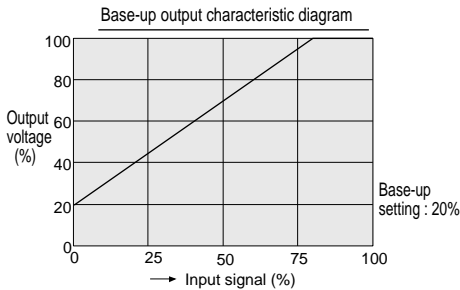
### Output limiter (High & Low)

Output highest and lowest values can be set via front keys.



### Base-up setting (Output bias)

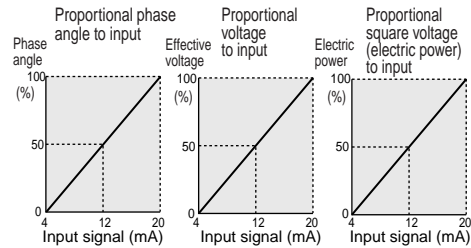
Output when the setting input is zero can be set via front keys. (Base-up setting is valid when output limiter low is set to 0.0)



### 3 type of output modes

When phase control is selected for linear load (R: resistor), output mode can be selected from Proportional phase angle to input, proportional voltage to input, and proportional square voltage (electric power) to input.

\* Default setting is proportional square voltage to input.



### Optional Functions

- ☆ Heater break alarm
- ☆ Output voltmeter (Only phase control)
- ☆ Current limiter (Only phase control)

This is a function to control not to exceed the current limiter value which load current set. Because it is not held down rush current in the case of the load that rush current is big, please use it together with a soft start function.

## Specifications

#### Maximum Load Current

20A AC, 30A AC, 45A AC, 60A AC, 80A AC, 100A AC

#### Control Method

Phase control, Zero-cross control (Selectable)

#### Applicable Load

Linearity (R:Resistor) load  
Inductive load (When phase control: Control of primary side of a transformer, magnetic field density 1.25T or less)

#### Input Signal

- a) Current input 4 to 20mA DC (Input impedance : 100 Ω )
- b) Voltage input 1 to 5V DC (Input impedance : 30kΩ)
- c) Voltage pulse input 0/12V DC (Input impedance : 30kΩ)
- d) Non-voltage contact input (Input impedance : 47Ω)

#### Minimum Load Current

0.6A (20A type), 1A (30A, 45A, 60A, 80A, 100A type)

#### Output Voltage Range

0 to 98% of rated voltage

#### Power Supply Voltage

90 to 264V AC (Including power supply voltage variation)  
[Rating : 100 to 240V DC]

#### Power Frequency

50/60Hz (Automatic discriminating)

#### Allowable Power Frequency Variation

±1Hz (Performance guarantee range)  
±2Hz (Operating guarantee range)

#### Output Setting Range

Gradient setting : 0.0 to 100% [Front key or external setting unit]  
Output limiter (High) : 0.0 to 99.9% [Front key or external setting unit]  
Output limiter (Low) : 0.0 to 99.9% [Front key or external setting unit]  
Base-up setting (Output bias) : 0.0 to 99.9% [Front key]  
Manual setting : 0.0 to 99.9% [Front key]

#### Output Mode

When phase control is selected for linearity load (R: resistor), output mode can be selected from Proportional phase angle to input, proportional voltage to input, and proportional square voltage (electric power) to input.

#### Current Limiter (Optional: Only phase control type)

Setting Range : 0 to 32A (20A, 30A type)  
0 to 55A (45A type)  
0 to 70A (60A type)  
0 to 90A (80A type)  
0 to 110A (100A type)

#### Heater Break Alarm (Optional)

Accuracy : Less than ± 2A (20A, 30A)

Less than ±10% of rated current (45A, 60A, 80A, 100A)

Alarm decision delay frequency : 0 to 99

Output : Open collector output, 24V DC, Maximum 100mA

#### Cooling Method

Natural convection

#### Allowable Ambient Temperature

Performance guarantee range: 0 to +40°C

Operating guarantee range: -15 to +55°C

#### Allowable Ambient Humidity

5 to 95%RH (Non-condensing)

#### Dielectric Voltage

Between main circuit, power terminals and radiation fins  
: 2000V AC for one minute.

#### Insulation Resistance

Between main circuit, power terminals and radiation fins  
: 20M ohms or more (500V DC)

#### Mounting Method

Vertical mounting

#### Weight

Approx. 0.9kg (20A, 30A)

Approx. 1.3kg (45A, 60A)

Approx. 1.9kg (80A, 100A)

#### Contents of Digital Display

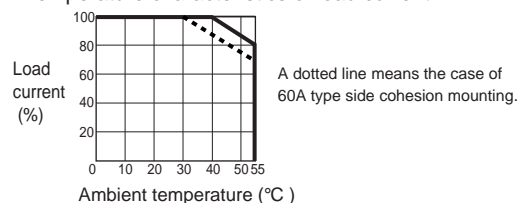
Input signal value, Phase angle ratio value, Frequency value, Control method, Soft up/Soft down time, Gradient set value, Output limiter (High/Low), Base-up set value.

#### Compliance with Standards

- UL Recognized
- CSA Certified (Released soon)



- Temperature characteristics of load current



## Model and Suffix Code

Specifications	Model and Suffix Code	
Model	THV <span style="float:right">- 1 PZ <input type="checkbox"/> - <input type="checkbox"/> * <input type="checkbox"/> N <input type="checkbox"/></span>	
Power Supply	Single-phase 100 to 240V AC	1
Control method	Phase control/Zero-cross control (Default : Phase control)	PZ
Max. load current	20A AC 30A AC 45A AC 60A AC 80A AC 100A AC	020 030 045 060 080 100
Input signal <sup>1</sup>	0 to 10V DC 1 to 5V DC 4 to 20mA DC	5 6 8
Optional function 1 (Heater break alarm)	No heater break alarm, No current limiter Heater break alarm and Current limiter	N H
Optional function 2	No option function 2	N
Accessories <sup>2, 3, 4</sup>	Setter (Volume, Knob, Scale plate) 1 unit + Connector (Plug) Setter (Volume, Knob, Scale plate) 2 units + Connector (Plug) Fuse unit (Fast-blow fuse [1 piece] + Holder [3 circuit type]) Output voltmeter : 150V span (For phase control) Fuse unit (Fast-blow fuse [1 piece] + Holder [1 circuit type]) Output voltmeter : 300V span (For phase control) Connector	-1 -2 -3 -4 -5 -6 -9

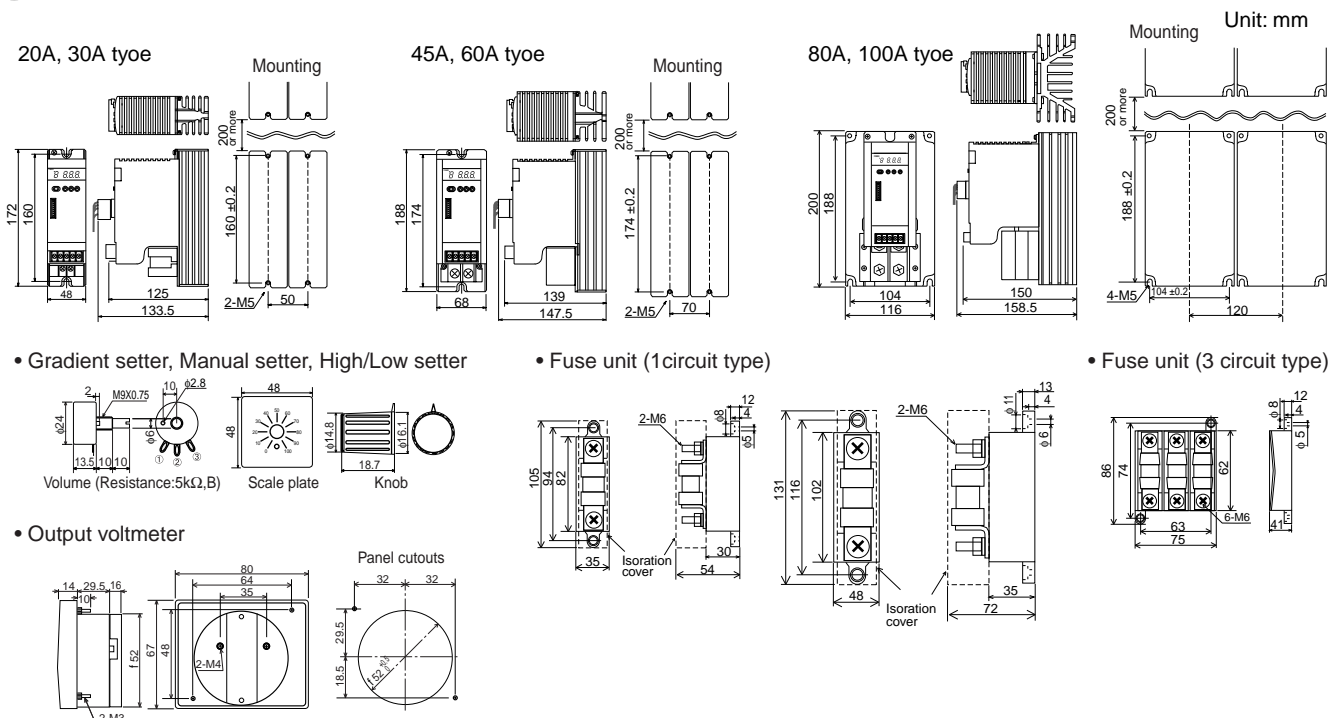
- Input signals 1 to 5V DC, 4 to 20mA DC and voltage pulse input are switchable with short bars. For a contact input, specify the connector as an accessory as input comes via a connector.
- Setters are for external gradient setter, external manual setter, high/low external setter for ON/OFF control. (Use two pieces of setter if gradient setting and manual setting are performed externally, or high/low setting for on/off control is performed, two setters are required.)
- Specify two or more types simultaneously with the exception of the following combinations : -1-3 : Setter, with fuse unit and connector, -1-2-9 and -4-5, -3-6 cannot be specified simultaneously.
- Accessories do not support UL/CSA.

### Accessories

Name	Code
Setter	THVP-S01
Output Voltmeter	Span : 150V AC THVP-V01
	Span : 300V AC THVP-V02
Connector (plug)	THVP-C01
Fuse unit (Fast-blow fuse [1 piece] + Holder [3 circuit type])	20A THVP-F21
	30A THVP-F31
	20A THVP-F22
Fuse unit (Fast-blow fuse [1 piece] + Holder [1 circuit type])	30A THVP-F32
	45A THVP-F42
	60A THVP-F62
	80A THVP-F82
	100A THVP-FA2

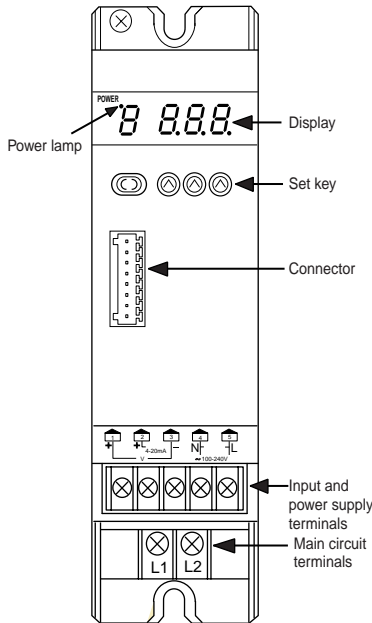
Name	Code
Fast-blow fuse for 3 circuit type (1 piece)	20A THVP-F20
	30A THVP-F30
Fast-blow fuse for 1 circuit type (1 piece)	20A THVP-F2A
	30A THVP-F3A
	45A THVP-F45
	60A THVP-F60
	80A THVP-F80
100A THVP-FA0	
Fuse Holder (3 circuit type)	20A, 30A THVP-H01
Fuse Holder (1 circuit type)	20A, 30A, 45A THVP-H02
	60A, 80A, 100A THVP-H03

## External Dimensions

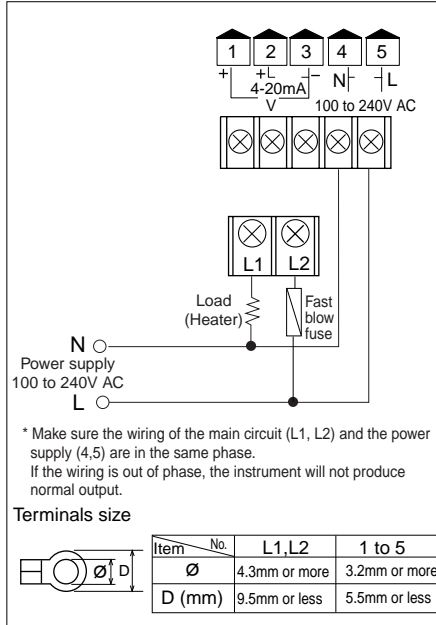


# Power Controller THV Series

## External Wiring



### Main circuit

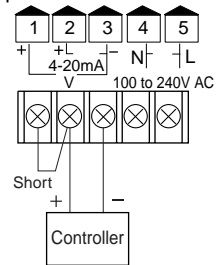


#### Terminals size

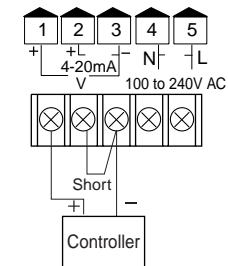
Item	No.	L1, L2	1 to 5
∅		4.3mm or more	3.2mm or more
D (mm)		9.5mm or less	5.5mm or less

### Input signal

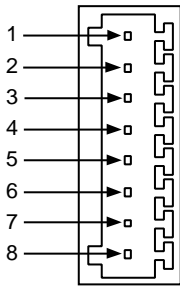
#### 4 to 20mA input



#### 1 to 5V and voltage pulse input

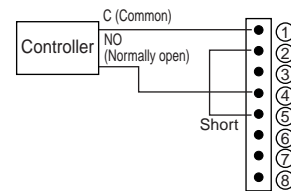


### Connector

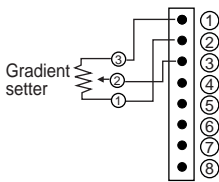


Pin No.	Contents
1	+5V output
2	0V (GND)
3	Gradient setting input (0 to 5V input by gradient setter)
4	Manual setting input (0 to 5V input by manual setter)
5	Auto/manual setting selection (Open: Auto setting) • External contact input Shorting pins No.2 (GND) with No.5 pin results in the manual setting mode.
6	Open collector output (+) : Heater break alarm output
7	Open collector output (-) : Heater break alarm output
8	Unused

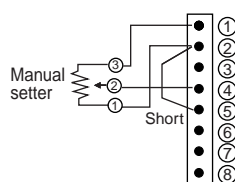
### Contact input



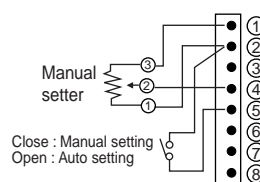
#### • Auto setting (With gradient setter)



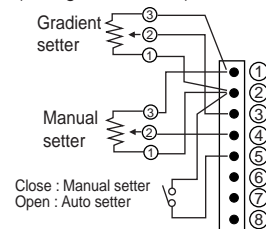
#### • Manual setting (With manual setter)



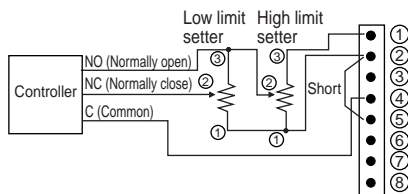
#### • Auto/Manual setting selection



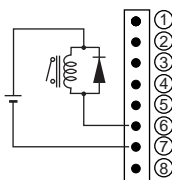
#### • Auto/Manual setting selection (With gradient setter)



#### • ON/OFF control



#### • Heater break alarm output



\* Connect a diode when a relay is used.

### Output setting selection

There are three output settings; input signal from a controller, external manual setting, and internal manual setting. Selection can be made via front keys for external contact action selection and external contact (connector Nos. 2-5).

External contact action selection	Close	Open
Only internal manual setting (Front key)	Internal manual setting	Internal manual setting
Internal manual setting (Front key) / Input signal	Internal manual setting	Input signal from controller
External manual setting (Front key) / Input signal	External manual setting	Input signal from controller

\* External contact is open when a connector is not used.