

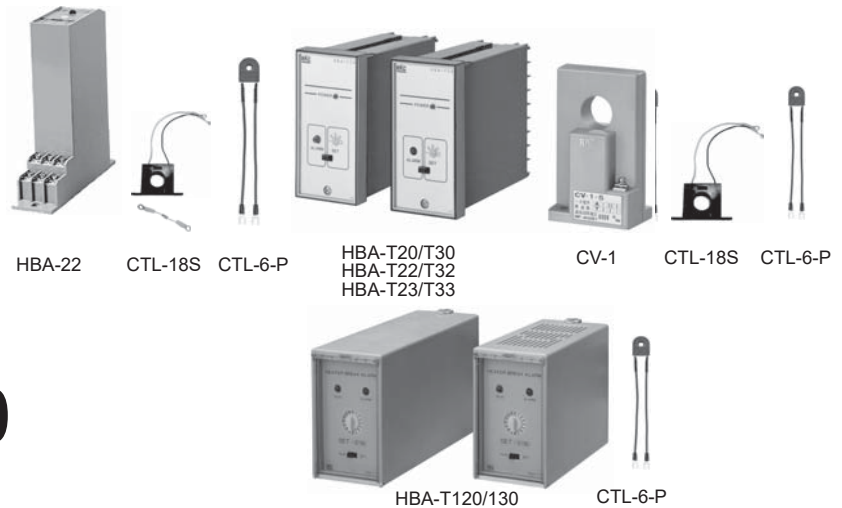
HBA-22

HBA-T20/T30

HBA-T22/T32

HBA-T23/T33

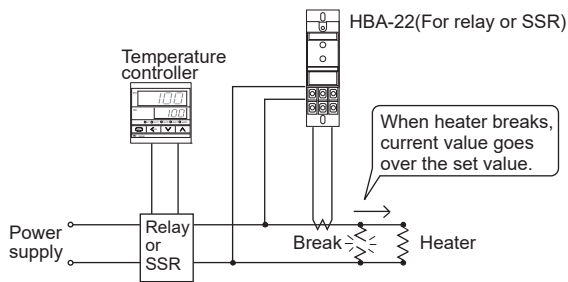
HBA-T120/T130



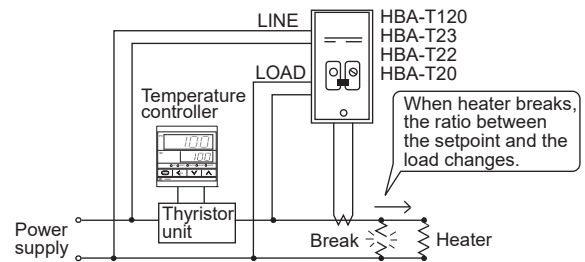
General Description

The heater break alarm is a contact output device that monitors the heater current and activates the alarm when the current falls below the set value.

• HBA-22



• HBA-T120/23/22/20



Products List

Model	Output Device	Mounting	CT type	Remarks
HBA-22	Relay, SSR	Wall mounting	CTL-6-P-□ (Max 30A) CTL-18S-□ (Max 100A)	Suitable when controller's output cycle time is 2 seconds or longer. Use two units for three-phase load.
HBA-T20	Single-phase SCR power controller, SSR, Relay	Panel mounting	CV-1-□	Suitable for phase control and zero-cross control by SCR power control device.
HBA-T30	Three-phase SCR power controller, SSR, Relay	Panel mounting	CV-1-□ (2 piece/unit)	Suitable for phase control and zero-cross control by SCR power control device.
HBA-T22	Single-phase SCR power controller, SSR, Relay	Panel mounting	CTL-6-P-N	Suitable for phase control and zero-cross control by SCR power control device.
HBA-T32	Three-phase SCR power controller, SSR, Relay	Panel mounting	CTL-6-P-N (2 piece/unit)	Suitable for phase control and zero-cross control by SCR power control device.
HBA-T23	Single-phase SCR power controller, SSR, Relay	Panel mounting	CTL-18S-N	Suitable for phase control and zero-cross control by SCR power control device.
HBA-T33	Three-phase SCR power controller, SSR, Relay	Panel mounting	CTL-18S-N (2 piece/unit)	Suitable for phase control and zero-cross control by SCR power control device.
HBA-T120	Single-phase SCR power controller, SSR, Relay	DIN-rail mounting and wall mounting	MCTL-6-P-N (Max 30A) MCTL-12-S56-10L-N (Max 100A)	Built-in MCU makes the load setting easy using automatic calculation function. Suitable for phase control and zero-cross control by SCR power control device.
HBA-T130	Three-phase SCR power controller, SSR, Relay	DIN-rail mounting and wall mounting	MCTL-6-P-N (Max 30A) MCTL-12-S56-10L-N (Max 100A) (2 pieces/unit)	Built-in MCU makes the load setting easy using automatic calculation function. Suitable for phase control and zero-cross control by SCR power control device.

Heater Break Alarm Modules HBA Series

Model and Suffix Code

• HBA-21,22

Specifications	Model and Suffix Code
Model	HBA-22 (for relay contact and SSR control)

Power Supply : 100/110V AC, 200/220V AC

• HBA-T20,T30

Specifications	Model and Suffix Code
Model	HBA-T20 (Single phase type) <input type="checkbox"/> HBA-T30 (Three phase type)
Control type	Phase angle control P Zero-crossing control Z

• HBA-T22,T32

Specifications	Model and Suffix Code
Model	HBA-T22 (Single phase type) <input type="checkbox"/> - <input type="checkbox"/> HBA-T32 (Three phase type)
Control type	Phase angle control P Zero-crossing control Z
Load current	5A 5 10A 10 20A 20 30A 30

• HBA-T23,T33

Specifications	Model and Suffix Code
Model	HBA-T23 (Single phase type) <input type="checkbox"/> - <input type="checkbox"/> HBA-T33 (Three phase type)
Control type	Phase angle control P Zero-crossing control Z
Load current	30A 30 100A 100

• HBA-T120,T130

Specifications	Model and Suffix Code
Model	HBA-T120 (Single phase type) <input type="checkbox"/> - <input type="checkbox"/> HBA-T130 (Three phase type)
Control type	Phase angle control P Zero-crossing control Z
Load current	5A (1 to 5A) 5 30A (6 to 30A) 30 100A (20 to 100A) 100

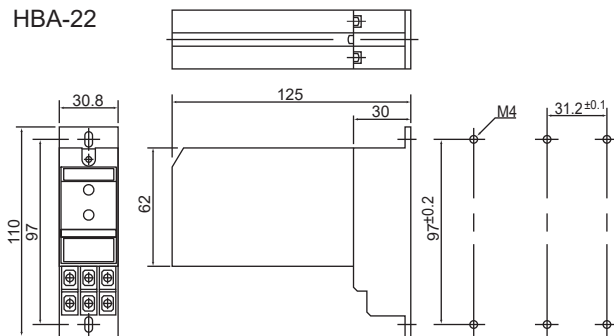
• CT (Current transformer)

Model	Max.Load Current	Applicable products
CV-1-5	5A	HBA-T20, T30 *1
CV-1-30	30A	
CV-1-100	100A	
CTL-6-P-5	5A	HBA-22
CTL-6-P-10	10A	
CTL-6-P-20	20A	
CTL-6-P-30	30A	
CTL-18S-30	30A	
CTL-18S-30-C	30A	
CTL-18S-100	100A	HBA-T22, T32 *1
CTL-18S-100-C	100A	
CTL-6-P-N	According to HBA module	
CTL-18S-N	According to HBA module	HBA-T23, T33 *1
MCTL-6-P-N	According to HBA module	HBA-T120-5/30,HBA-T130-5/30 *1
MCTL-12-S56-10L-N	According to HBA module	HBA-T120-100,HBA-T130-100 *1

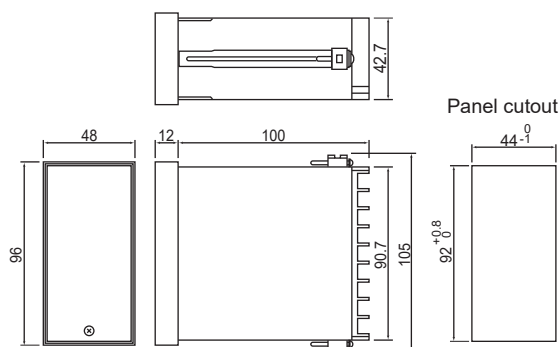
*1 HBA-T30, T32, T33 and T130 require 2 CTs per unit.

External Dimensions

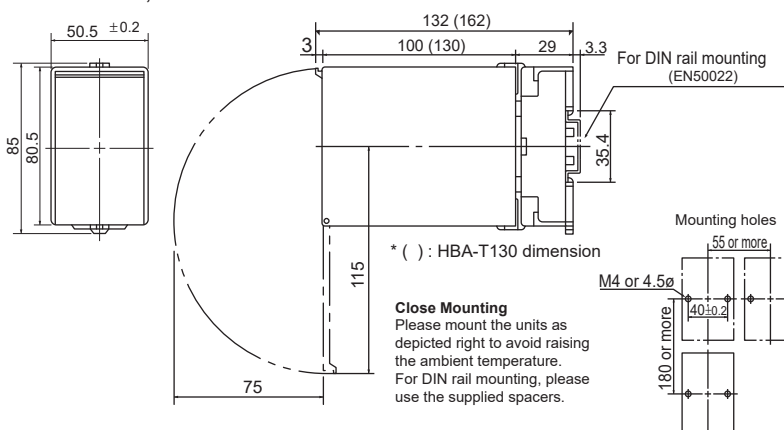
HBA-22



HBA-T20,T22, T23, T30, T32, T33

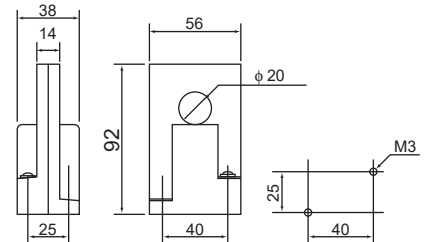


HBA-T120,T130

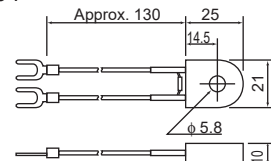


Units : mm

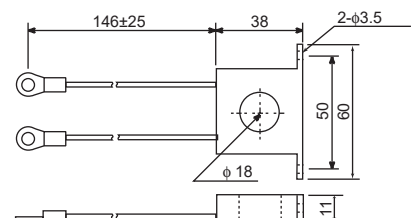
CV-1



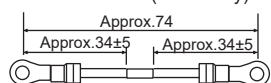
CTL-6-P



CTL-18S



Shunt Resistor (Accessory)



MCTL-12-S56-10L-N

