

# USB Communication Converter COM-K2

## USB Driver Installation Manual

[ Windows Vista/Windows 7 ]  
[ Windows 8/Windows 8.1 ]

**RKC**® RKC INSTRUMENT INC.

MAY 2015

IMT01D12-E1

### NOTICE

- This manual assumes that the reader has a fundamental knowledge of the principles of computer technology and communications.
- The figures, diagrams and numeric values used in this manual are only for explanation purpose.
- RKC reserves the ownership and copyright of this software and this document.
- RKC is not responsible for any damage or injury that is caused as a result of using this product, product failure or indirect damage.
- RKC is not responsible for any damage and/or injury resulting from the use of products made by imitating this product.
- The specifications of the software and the information in this document are subject to change without prior notice.
- If the specifications of the software do not correspond with the contents of this document, the software specifications have priority.
- RKC software is licensed for use on one computer and may not be modified. This software may not be duplicated except for backup purposes.

### SYMBOLS



: This mark indicates important information on installation, handling and operating procedures.



: This mark indicates supplemental information on installation, handling and operating procedures.



: This mark indicates where additional information may be located.

- Microsoft, Windows, Windows Vista, Windows 7, Windows 8 and Windows 8.1 are registered trademarks of Microsoft Corporation in the USA and other countries.
- Company names and product names used in this manual are the trademarks or registered trademarks of the respective companies.

# CONTENTS

1. SOFTWARE OPERATING ENVIRONMENT .....	2
2. USB DRIVER INSTALLATION .....	3
3. COMMUNICATION PORT NUMBER CHECK.....	5
4. UNINSTALLING USB DRIVER.....	6

## 1. SOFTWARE OPERATING ENVIRONMENT

The following hardware and software requirements have to be met for installing and operating the software:

CPU	PC on which Windows Vista, Windows 7, Windows 8 or Windows 8.1 runs comfortably without operational or response problem.
OS	Windows Vista (32-bit/64-bit) Windows 7 (32-bit/64-bit) Windows 8 (32-bit/64-bit) Windows 8.1 (32-bit/64-bit)
USB port	USB 2.0



If the OS of the PC used is Windows XP, refer to **Installation of USB driver for COM-K2 communication converter (Windows XP) [IMT01D13-E□]**.

This manual can be downloaded from the official RKC website:

<http://www.rkcinst.com/english/soft/index.asp>

## 2. USB DRIVER INSTALLATION

### CAUTION

- Log in to a user account with administrator rights.
- Close all applications currently running on your PC.
- NEVER connect the COM-K2 to the PC with the USB cable until the USB driver installation has been completed.



For the user account, refer to the Windows help.

Open User Accounts (Windows Vista, Windows 7):

Open User Accounts by clicking the **[Start]** button, clicking **[Control Panel]**, clicking **[User Accounts and Family Safety]**, and then clicking **[User Accounts]**.

Open User Accounts (Windows 8):

Open User Accounts by clicking the **[Settings]** of Charm bar, clicking **[Change PC settings]**, and then clicking **[Users]**.

Open User Accounts (Windows 8.1):

Open User Accounts by clicking the **[Settings]** of Charm bar, clicking **[Change PC settings]**, and then clicking **[Accounts]**.



The descriptions are for 64-bit Windows 8.1. If other OS is used, screen and name may vary.



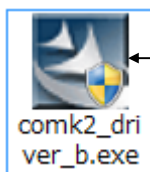
When Windows Security dialog box is displayed during installation, click **[Install]** button.

### ■ Installing USB driver

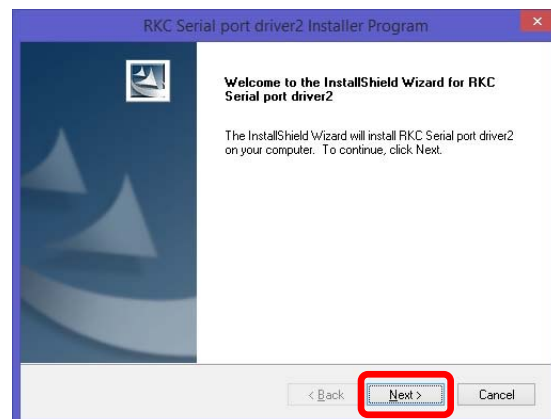
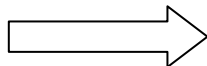
1. Download **comk2\_driver\_b.exe** from the official RKC website, and save it into any folder in the hard disk of the PC.

URL: <http://www.rkcinst.com/english/soft/index.asp>

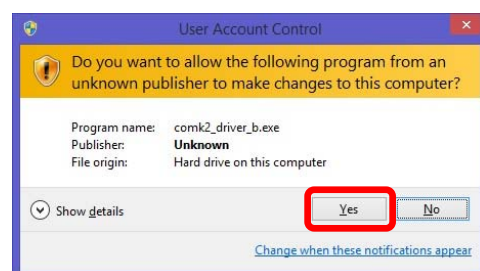
2. Execute **comk2\_driver\_b.exe**, and InstallShield Wizard window is displayed. Click **[Next]** button.



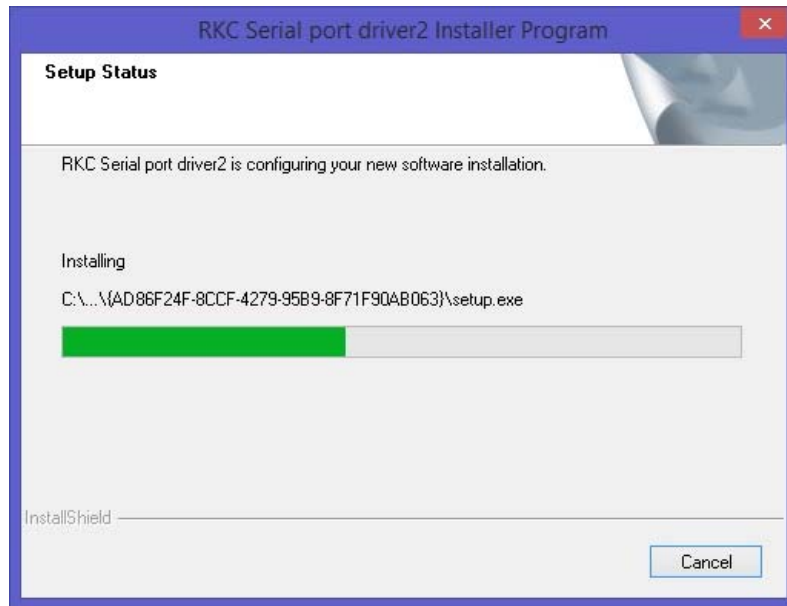
Execute



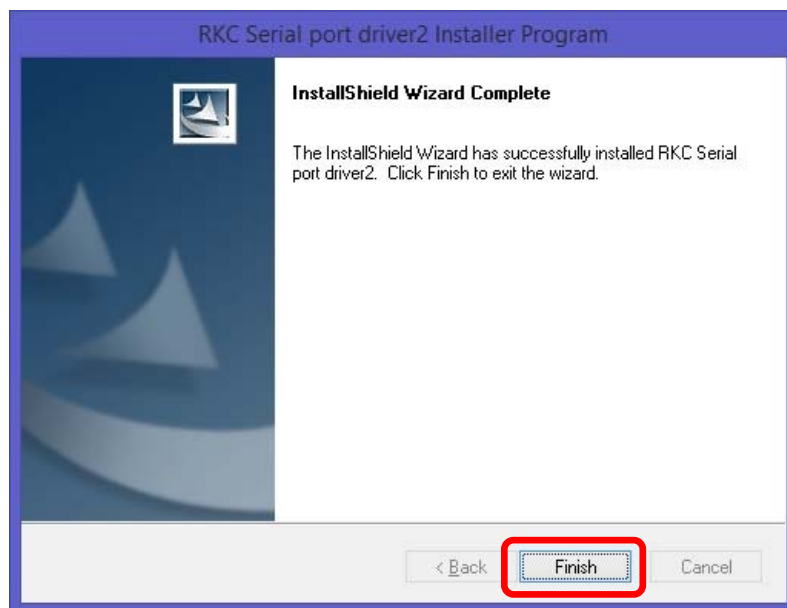
When User Account Control dialog box is displayed, click **[Yes]** button.



3. Setup Status window is displayed.



4. InstallShield Wizard Complete window is displayed. Click **[Finish]** to exit.



To reinstall the COM-K2 USB driver, uninstall the driver already installed on your computer before reinstalling the COM-K2 USB driver.

### 3. COMMUNICATION PORT NUMBER CHECK

After installing the USB driver, confirm the communication port number.  
Communication port number is required when using RKC communication support software.  
Communication port numbers vary by computer. Check as shown below.

1. Connect the COM-K2 to the PC with the USB cable.

2. Open the **Device Manager** window.



Open Device Manager


Windows Vista:

Open Device Manager by clicking the **[Start]** button, clicking **[Control Panel]**, clicking **[System and Maintenance]**, and then clicking **[Device Manager]**.

Windows 7:

Open Device Manager by clicking the **[Start]** button, clicking **[Control Panel]**, clicking **[System and Security]**, and then, under **[System]**, clicking **[Device Manager]**.

Windows 8/Windows 8.1:

① Press and hold the **[Windows]** key (  ) on keyboard and press the “X” key at the same time. The **[Quick access menu]** is displayed on the left side of the PC screen.

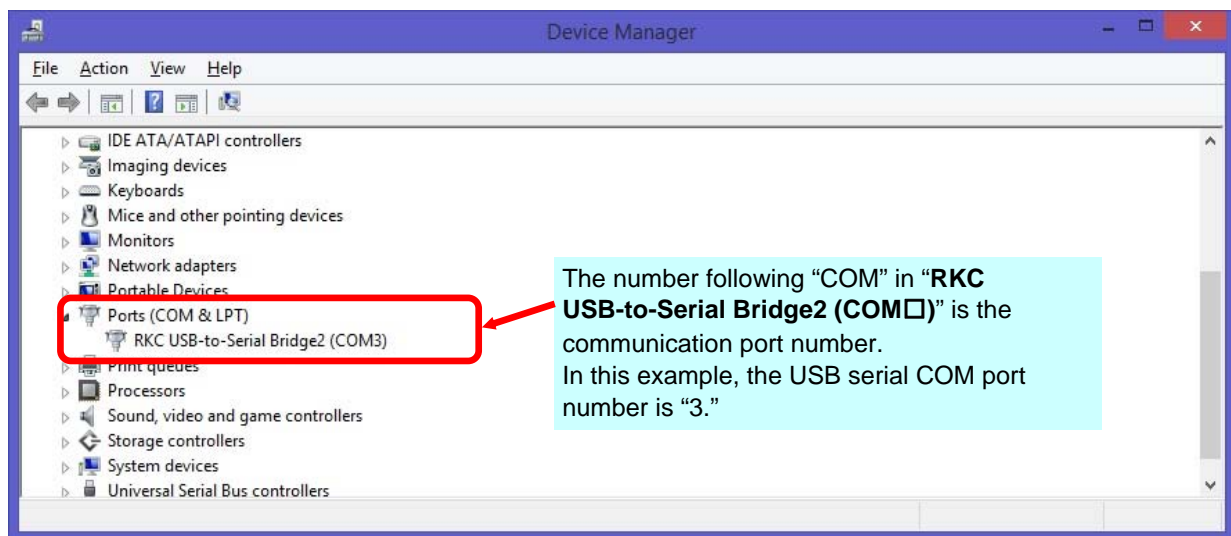
② Click **[Device Manager]** on the **[Quick access menu]**.



Windows Vista/Windows 7:

When User Account Control dialog box is displayed, click **[Yes]** button.

3. Click “>” or “+” next to “Ports (COM & LPT)” to display the ports.



If a yellow question mark appears over the icon of COM-K2 “RKC USB-to-Serial Bridge2 (COM□),” the COM-K2 might not be working normally. Reinstall the COM-K2 USB driver to solve the problem.

To uninstall or install the driver, refer to **4. UNINSTALLING USB DRIVER (P. 6)** and **2. USB DRIVER INSTALLATION (P. 3)**.



The descriptions are for 64-bit Windows 8.1. If other OS is used, screen and name may vary.

## 4. UNINSTALLING USB DRIVER

### CAUTION

- Log in to a user account with administrator rights.
- Close all applications currently running on your PC.



For the user account, refer to the Windows help.

Open User Accounts (Windows Vista, Windows 7):

Open User Accounts by clicking the **[Start]** button, clicking **[Control Panel]**, clicking **[User Accounts and Family Safety]**, and then clicking **[User Accounts]**.

Open User Accounts (Windows 8):

Open User Accounts by clicking the **[Settings]** of Charm bar, clicking **[Change PC settings]**, and then clicking **[Users]**.


Open User Accounts (Windows 8.1):

Open User Accounts by clicking the **[Settings]** of Charm bar, clicking **[Change PC settings]**, and then clicking **[Accounts]**.



The descriptions are for 64-bit Windows 8.1. If other OS is used, screen and name may vary.

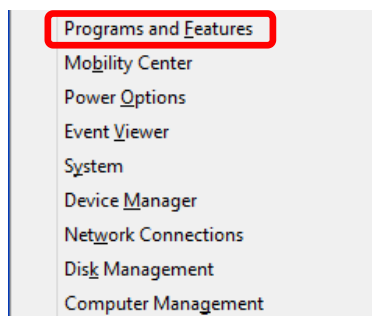
### ■ Uninstalling USB driver

1. Disconnect the USB cable from the PC.
2. Press and hold the **[Windows]** key () on keyboard and press the “X” key at the same time. The **[Quick access menu]** is displayed on the left side of the PC screen.



← Quick access menu

3. Open the **Programs and Features (Uninstall or change a program)** windows.



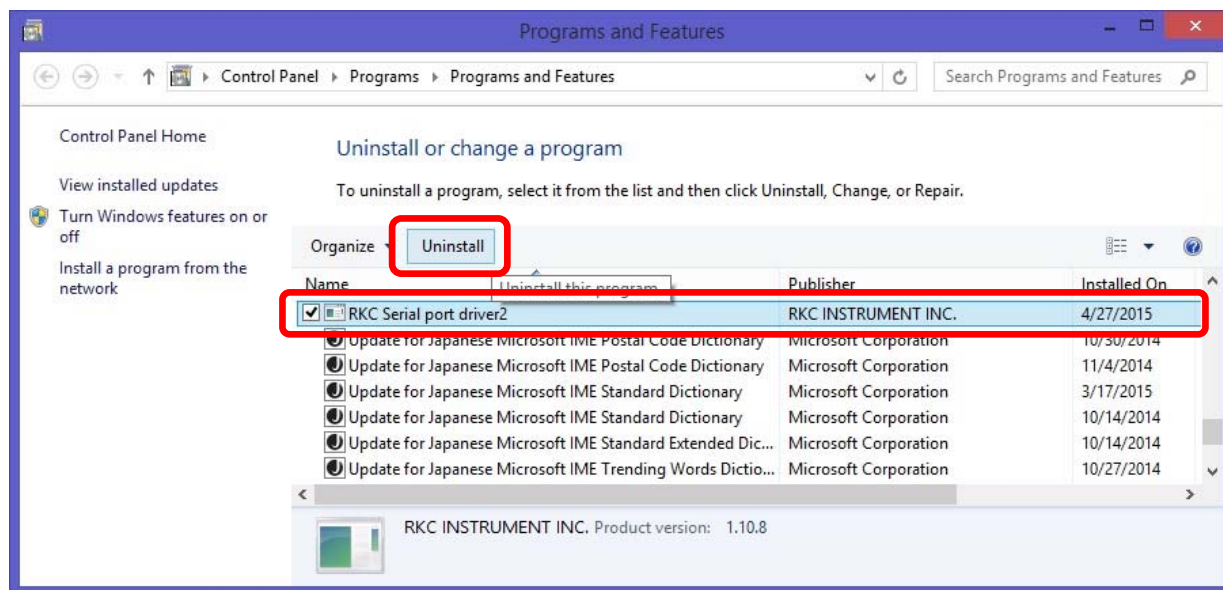
← Quick access menu



Open Programs and Features (Windows Vista, Windows 7):

Open Programs and Features by clicking the **[Start]** button, clicking **[Control Panel]**, and then clicking **[Uninstall a program]**.

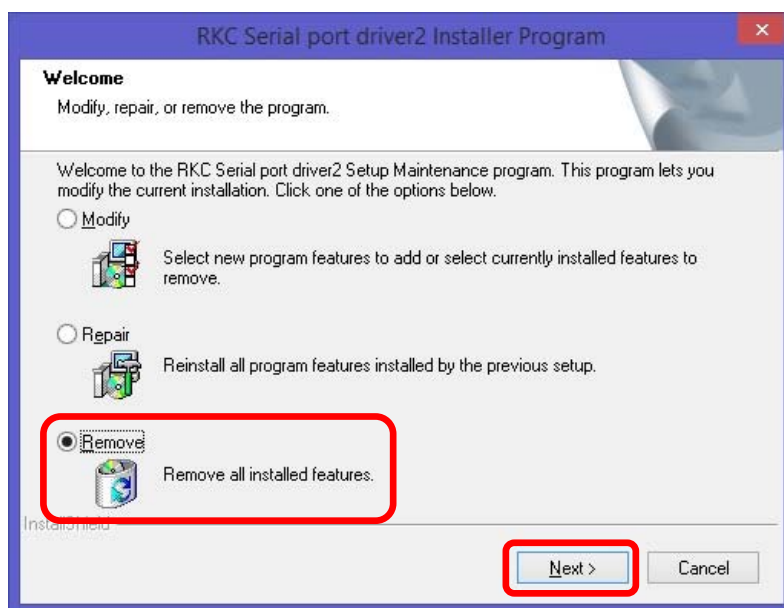
4. Select a **RKC Serial port driver2**, and then click **[Uninstall]**.



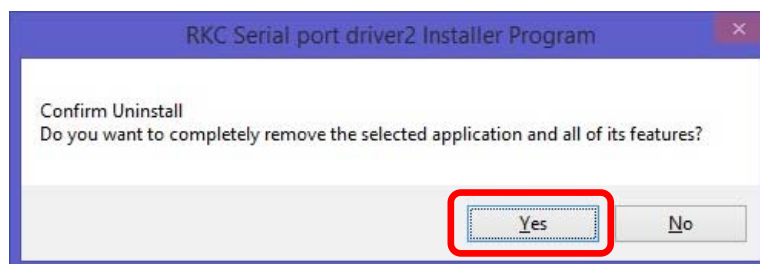
Windows Vista/Windows 7:

When User Account Control dialog box is displayed, click **[Yes]** button.

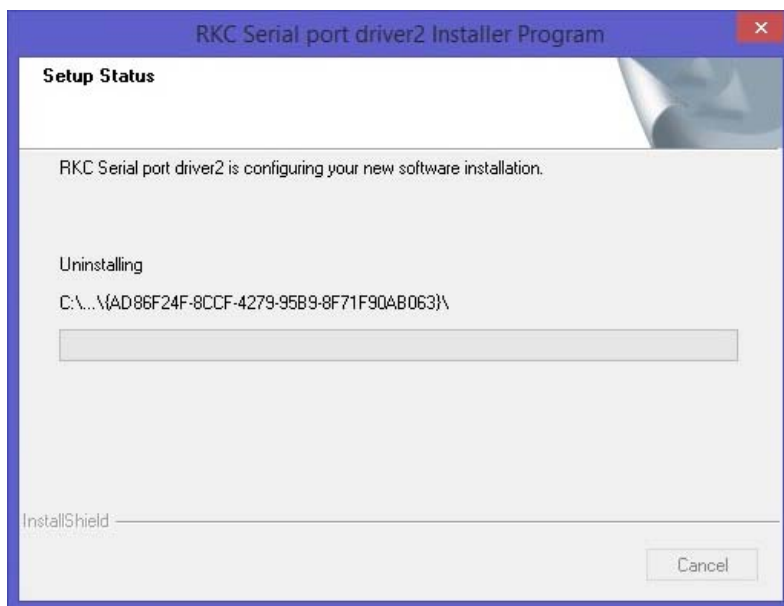
5. Setup Maintenance window is displayed. Select a **Remove**, and then click **[Next]**.



6. Confirm Uninstall dialog box is displayed. Click **[Yes]** button.



7. Setup Status window is displayed.



8. Uninstall Complete window is displayed. Click [**Finish**] to exit.

