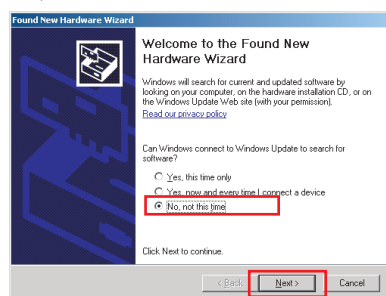


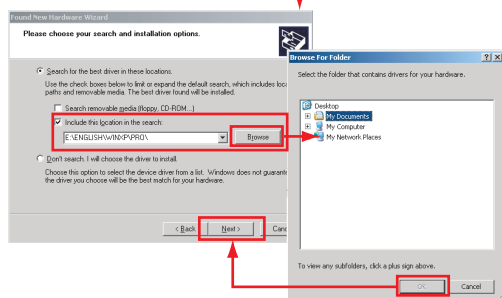
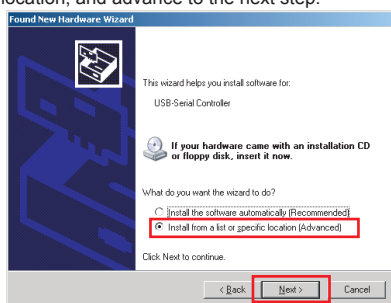
# Installation of USB driver for COM-K2 communication converter (Windows XP)

MAY 2015

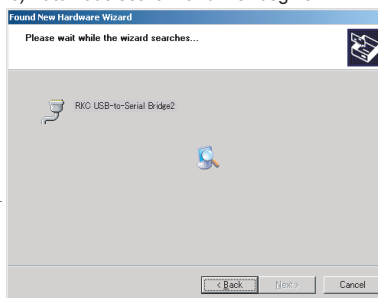
- a) Connect COM-K2 to the USB port of the PC.  
When the screen shown below was displayed, select "No, not this time" and advance to the next step.



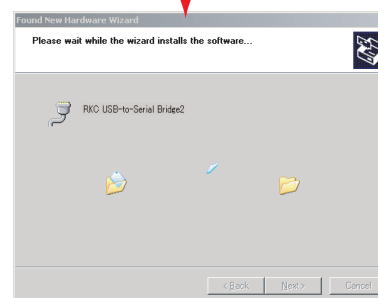
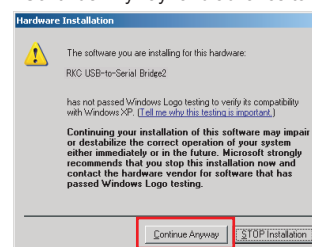
- b) When the driver was downloaded from our web site, select "Install from a list or specific location", specify the saved location, and advance to the next step.



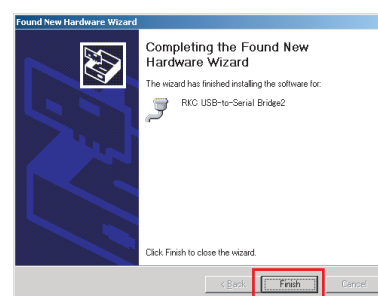
- c) Automatic search for driver begins.



- \* When the following message is displayed halfway, click "Continue Anyway" and advance to the next step.

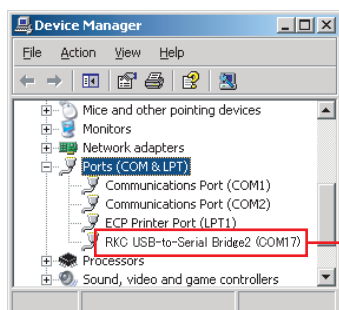


- d) When advanced in accordance with the displayed instructions, the Completing the Found New Hardware Wizard screen of the new hardware is displayed and installation of the USB driver is completed.



## ● COM port check

Check the communication tool port number which must be set.



Right click My Computer and open "Properties" "Device manager".  
Click "+" of "Ports (COM & LPT)".  
The screen shown at the left is displayed.

The port number of the □ part of "RKC USB-to-Serial Bridge2 (COM□)" is recorded beforehand.

### Reference

This port number depends on the environment of the PC used.